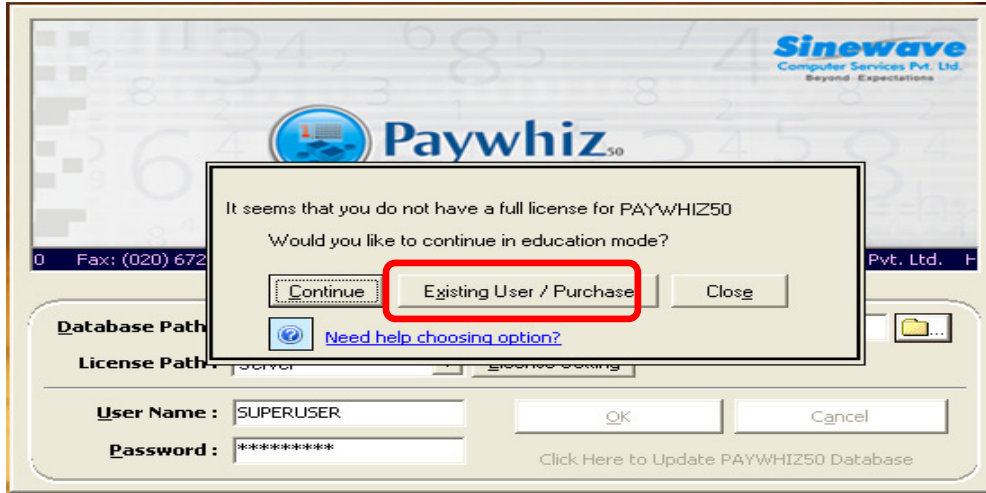
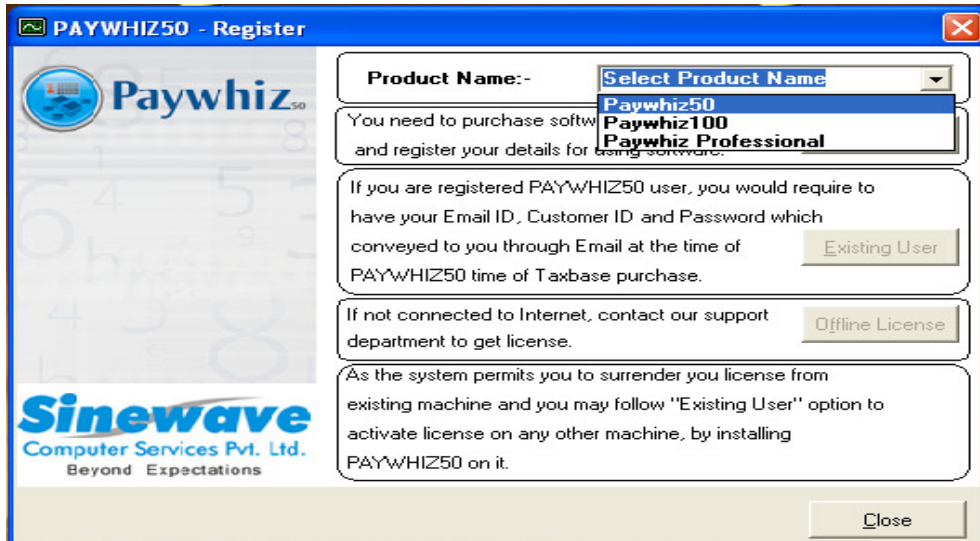


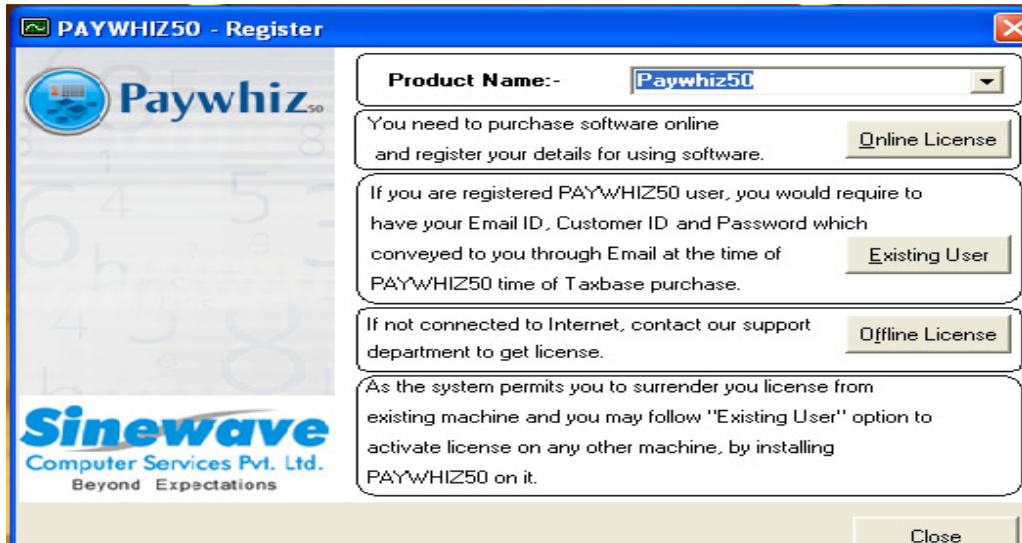
Double click on Paywhiz Icon, you will get Login screen. When you click "OK" on Login screen ,you will get Existing User/Purchase option.



After click on Existing User/Purchase option , select Paywhiz, Paywhiz50 or Paywhiz100 product from the drop down



After selecting product following screen will appear, here you can select online License or Existing user option




If you select **online License** option below screen will be appear. Enter mandatory details and click on Buy Now button. After making successful payment procedure, you will get license for your product automatically.

\*\*\* Note:

1. VAT, Service Tax and other statutory charges are at actual (AMC Charges Extra)
2. Physical Support option is not supported
3. This offer Price can not be clubbed with any other offer from Sinewave Computer Service Pvt. Ltd.
4. Sinewave Computer Services Pvt. Ltd. reserves all the rights regarding this offers

If you select **Existing user** option below screen will be appear. Enter all details and click on Register button. You will get license for your product.



The screenshot shows a dialog box titled "PAYWHIZ50 - Register" with a close button in the top right corner. The main area is titled "Enter Details" and contains the following fields and options:

- Email ID :
- Customer ID:
- Password :
- Hard Disk Formatted :  Yes  No

At the bottom, there are two buttons: "Register" and "Close".

If you select **Offline License** option below screen will be appear. Email below Serial No. to [license@sinewave.in](mailto:license@sinewave.in) . After few minutes , you will receive License Key on your sent mail ID.Then you can paste given License key in blew text box and click on Register button. You will get license for your product



The screenshot shows a dialog box titled "PAYWHIZ50 - Register" with a close button in the top right corner. The main area is titled "Information" and contains the following sections:

- Information**  
Customer ID :   
Please enter customer ID in user parameter/option once you receive full licence
- Step 1**  
Serial No
- Step 2**  
**Sinewave Computer Services Pvt. Ltd.**  
T-22, 3rd Floor, Super Mall, Salunke Vihar Road,  
Pune - 411040, Maharashtra, INDIA.  
Head Office Tel.: (020) 67251900  
Help Line .: (020) 66810000  
Fax: (020) 67251999  
Website: [www.Sinewave.co.in](http://www.Sinewave.co.in)  
Email: [license@sinewave.in](mailto:license@sinewave.in) , [support@sinewave.co.in](mailto:support@sinewave.co.in)
- Step 3:**  
Enter License Key:

At the bottom, there are three buttons: "Inform to Sinewave", "Register", and "Exit".